

**PPP2R5B Antibody (C-term)**  
**Purified Rabbit Polyclonal Antibody (Pab)**  
**Catalog # AP20958c**

**Specification**

---

**PPP2R5B Antibody (C-term) - Product Information**

Application	IF, WB,E
Primary Accession	<a href="#">Q15173</a>
Reactivity	Human
Host	Rabbit
Clonality	Polyclonal
Isotype	Rabbit IgG
Calculated MW	57393

**PPP2R5B Antibody (C-term) - Additional Information**

**Gene ID** 5526

**Other Names**

Serine/threonine-protein phosphatase 2A 56 kDa regulatory subunit beta isoform, PP2A B subunit isoform B'-beta, PP2A B subunit isoform B56-beta, PP2A B subunit isoform PR61-beta, PP2A B subunit isoform R5-beta, PPP2R5B

**Target/Specificity**

This PPP2R5B antibody is generated from a rabbit immunized with a KLH conjugated synthetic peptide between 466-500 amino acids from the C-terminal region of human PPP2R5B.

**Dilution**

IF~~1:25

WB~~1:1000

E~~Use at an assay dependent concentration.

**Format**

Purified polyclonal antibody supplied in PBS with 0.09% (W/V) sodium azide. This antibody is purified through a protein A column, followed by peptide affinity purification.

**Storage**

Maintain refrigerated at 2-8°C for up to 2 weeks. For long term storage store at -20°C in small aliquots to prevent freeze-thaw cycles.

**Precautions**

PPP2R5B Antibody (C-term) is for research use only and not for use in diagnostic or therapeutic procedures.

**PPP2R5B Antibody (C-term) - Protein Information**

**Name** PPP2R5B

**Function** As the regulatory component of the serine/threonine-protein phosphatase 2A (PP2A) holoenzyme, modulates substrate specificity, subcellular localization, and responsiveness to phosphorylation. The phosphorylated form mediates the interaction between PP2A and AKT1, leading to AKT1 dephosphorylation.

**Cellular Location**

Cytoplasm.

**Tissue Location**

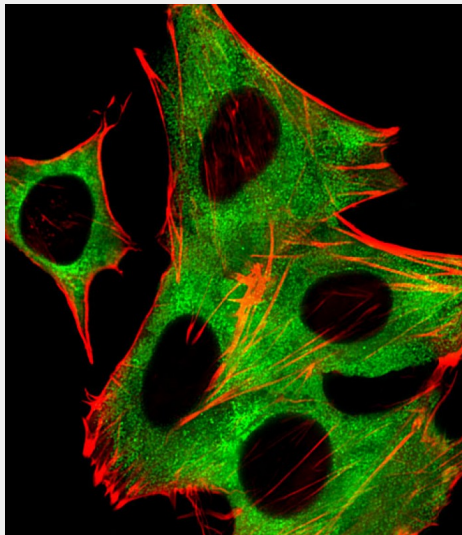
Highest expression in brain.

**PPP2R5B Antibody (C-term) - Protocols**

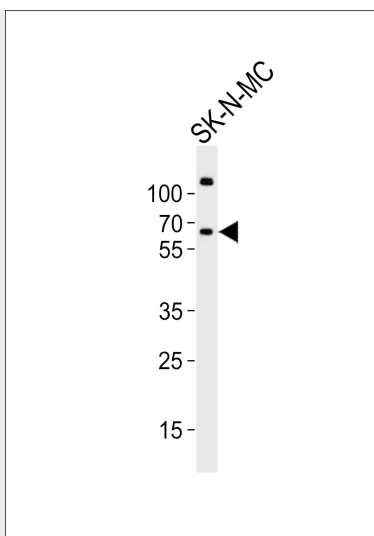
Provided below are standard protocols that you may find useful for product applications.

- [Western Blot](#)
- [Blocking Peptides](#)
- [Dot Blot](#)
- [Immunohistochemistry](#)
- [Immunofluorescence](#)
- [Immunoprecipitation](#)
- [Flow Cytometry](#)
- [Cell Culture](#)

**PPP2R5B Antibody (C-term) - Images**



Fluorescent image of SH-SY5Y cells stained with PPP2R5B Antibody (C-term)(Cat#AP20958c). AP20958c was diluted at 1:25 dilution. An Alexa Fluor 488-conjugated goat anti-rabbit IgG at 1:400 dilution was used as the secondary antibody (green). Cytoplasmic actin was counterstained with Alexa Fluor® 555 conjugated with Phalloidin (red).



Western blot analysis of lysate from SK-N-MC cell line, using PPP2R5B Antibody (C-term)(Cat. #AP20958c). AP20958c was diluted at 1:1000. A goat anti-rabbit IgG H&L(HRP) at 1:10000 dilution was used as the secondary antibody. Lysate at 20ug.

#### **PPP2R5B Antibody (C-term) - Background**

The B regulatory subunit might modulate substrate selectivity and catalytic activity, and also might direct the localization of the catalytic enzyme to a particular subcellular compartment. The phosphorylated form mediates the interaction between AKT1 and PP2A phosphatase leading to dephosphorylation of AKT1 on the 'Thr-308' and 'Ser-373' residues.

#### **PPP2R5B Antibody (C-term) - References**

McCright B.,et al.J. Biol. Chem. 270:26123-26128(1995).  
Zolnierowicz S.,et al.Biochem. J. 317:187-194(1996).  
McCright B.,et al.J. Biol. Chem. 271:22081-22089(1996).  
Kitajima T.S.,et al.Nature 441:46-52(2006).  
Rodgers J.T.,et al.Mol. Cell 41:471-479(2011).